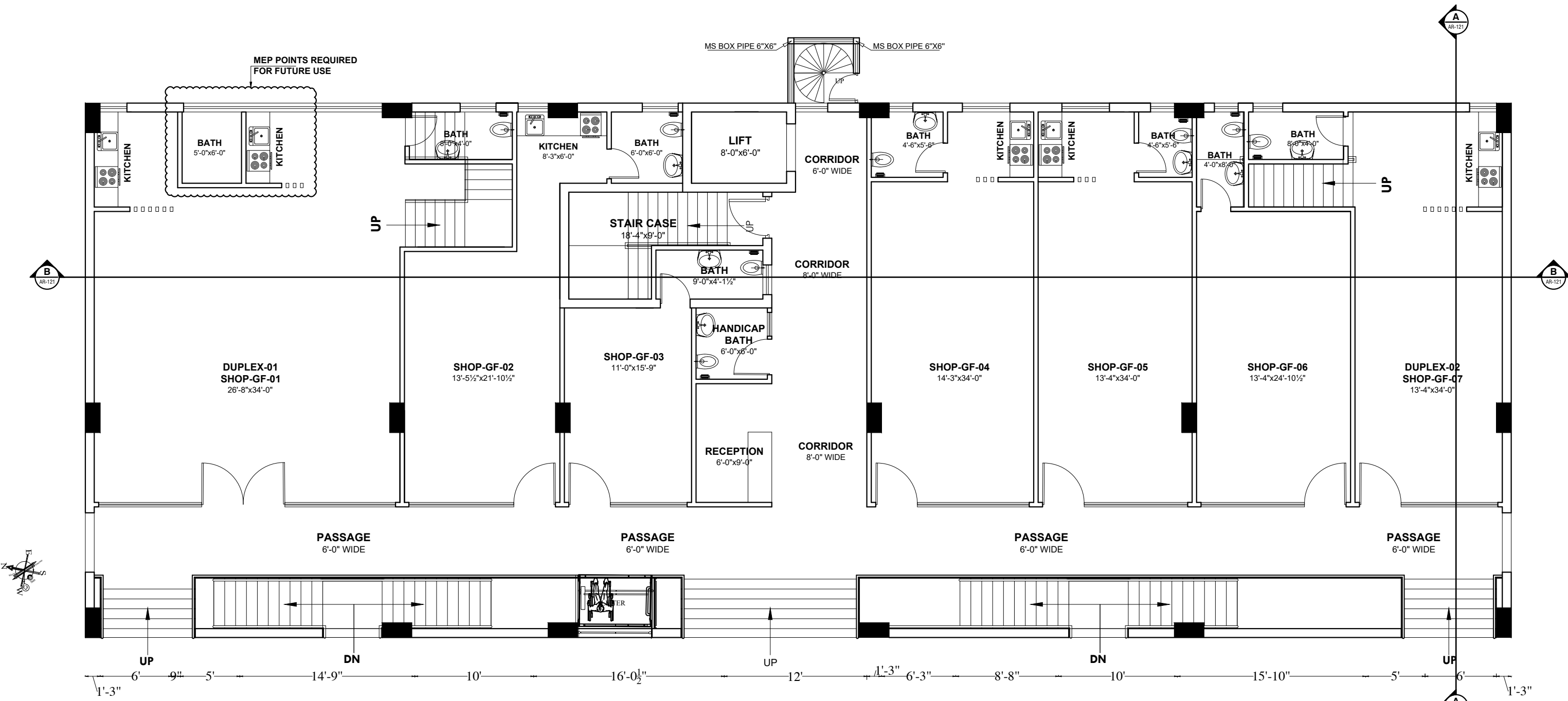


LOWER GROUND FLOOR

8 x SHOPS



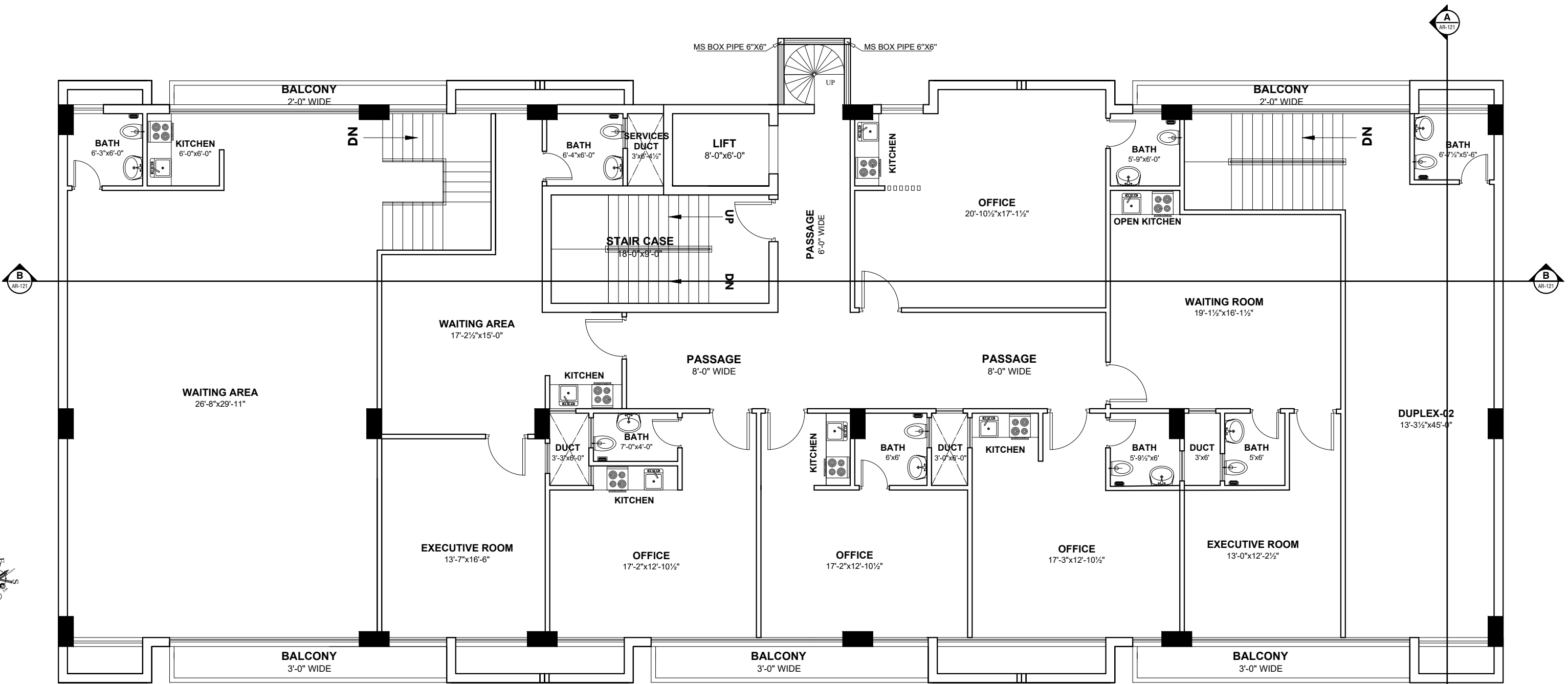
GROUND FLOOR

2 x DUPLEX
5 x SHOPS

ELECTRICAL = FRONT
SEWERAGE = REAR
GAS & PTCL = FRONT
WATER SUPL. = REAR
DRAINAGE = FRONT

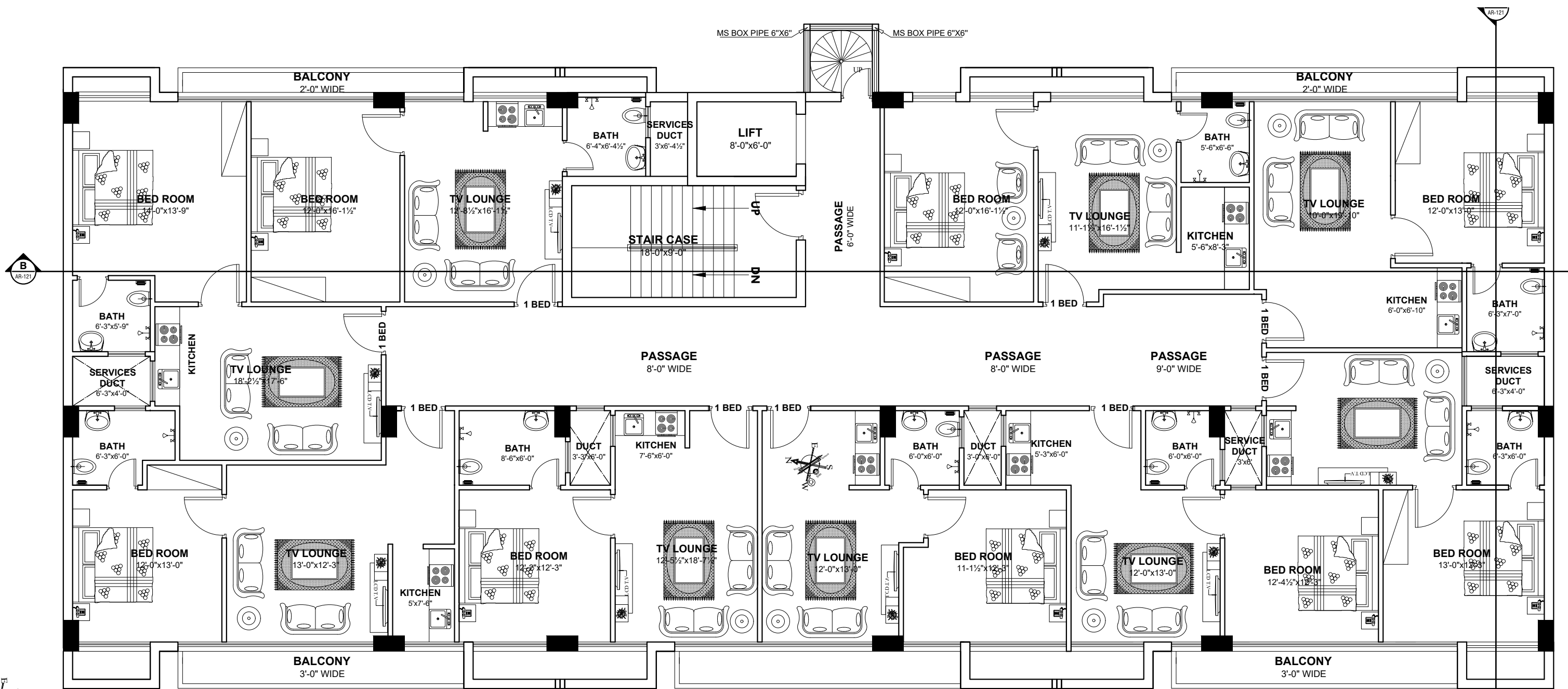
NOTE:
● AC OUT DOOR UNITS WILL BE PLACED AT TOP ROOF IF NOT MENTIONED
● PLACE A.C. OUT DOOR UNIT ON THE FLOOR OF BALCONY
● PROVIDE SLEEVE IN BEAMS FOR PLUMBING & ELECTRICAL PIPES
● FIRE FIGHTING EQUIPMENTS ARE MUST ON ALL FLOORS (AS PER MEP DRAWINGS)

NOTE:
1. LEVEL WILL BE MARKED FROM CENTER OF ROAD PARKING.
2. PROVIDE SLEEVE IN BEAM FOR PLUMBING & ELECTRICAL PIPES.
3. AC OUT DOOR UNITS FLOOR IF NOT MENTIONED.
4. PLACE AC OUT DOOR UNIT ON THE FLOOR BALCONY.
5. FIRE FIGHTING EQUIPMENTS AREA MUST ON ALL FLOOR (AS PER MEP DRAWINGS).
6. AS SERVICES AREA ON ONE SIDE JUST FRONT THEREFORE SOLDER PRESSURE TO BE DESIGNED ON FRONT SIDE.
7. WHEEL CHAIR LIFT INSTALLATION TO BE AS PER SUPPLIER / VENDOR SPECIFICATION AND DETAILS.



1ST FLOOR

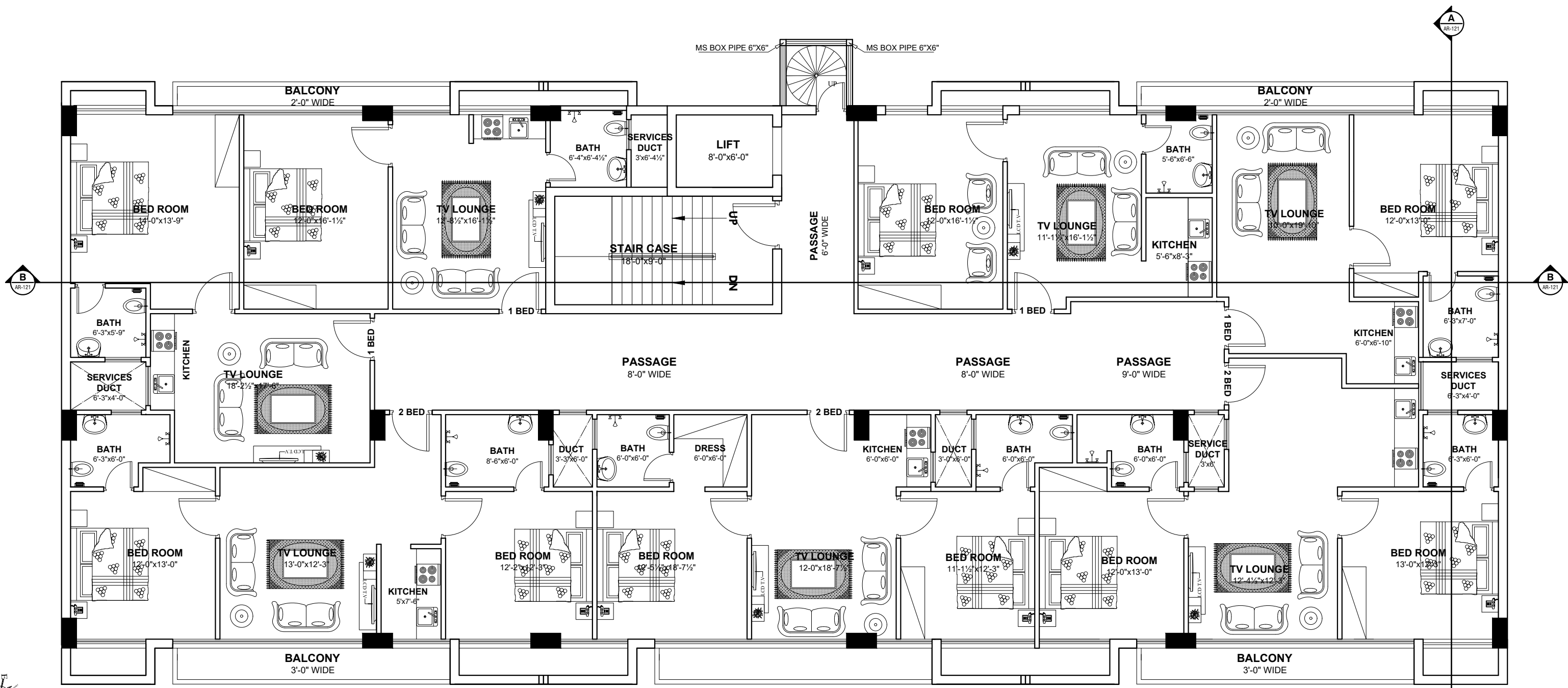
2 x DUPLEX
6 x OFFICES



2ND FLOOR

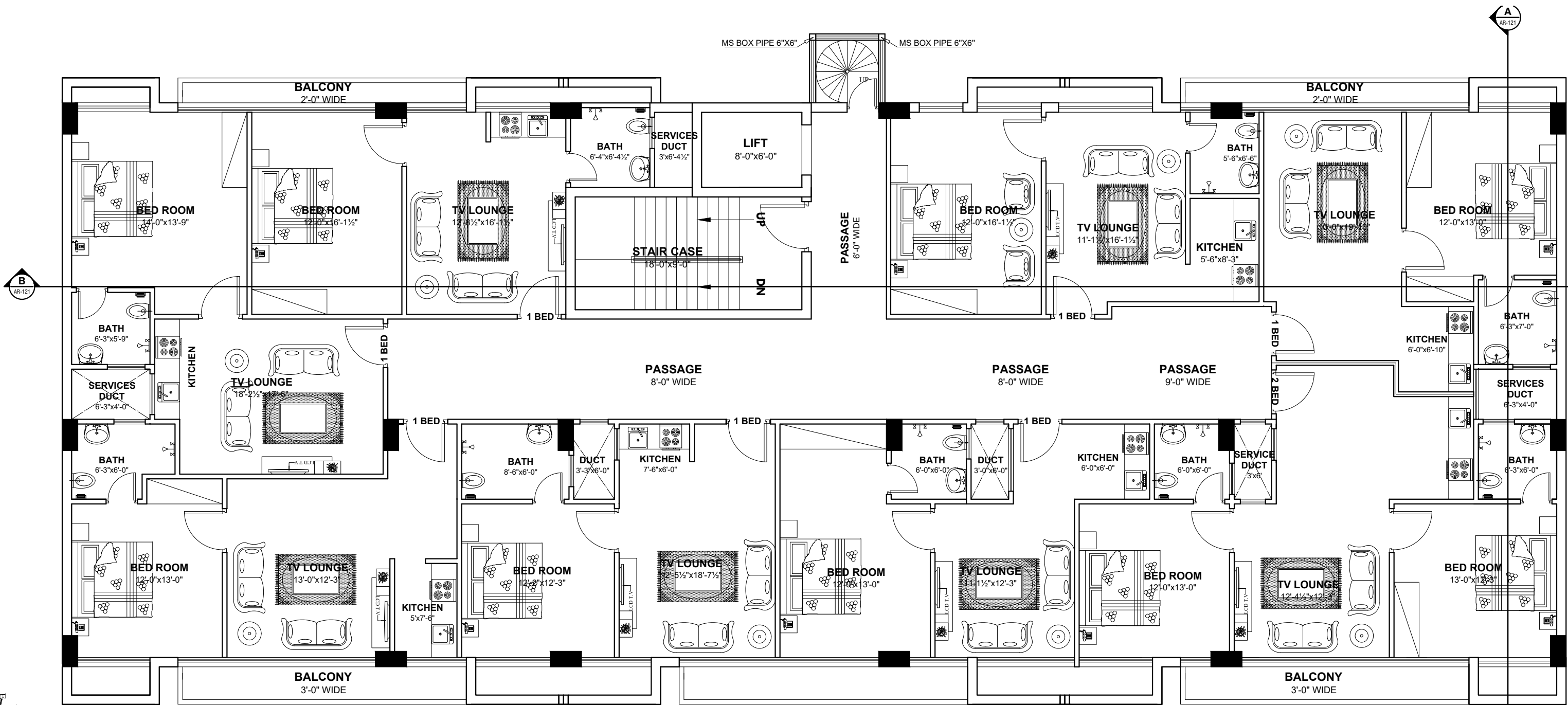
9 x 1 BED APARTMENTS





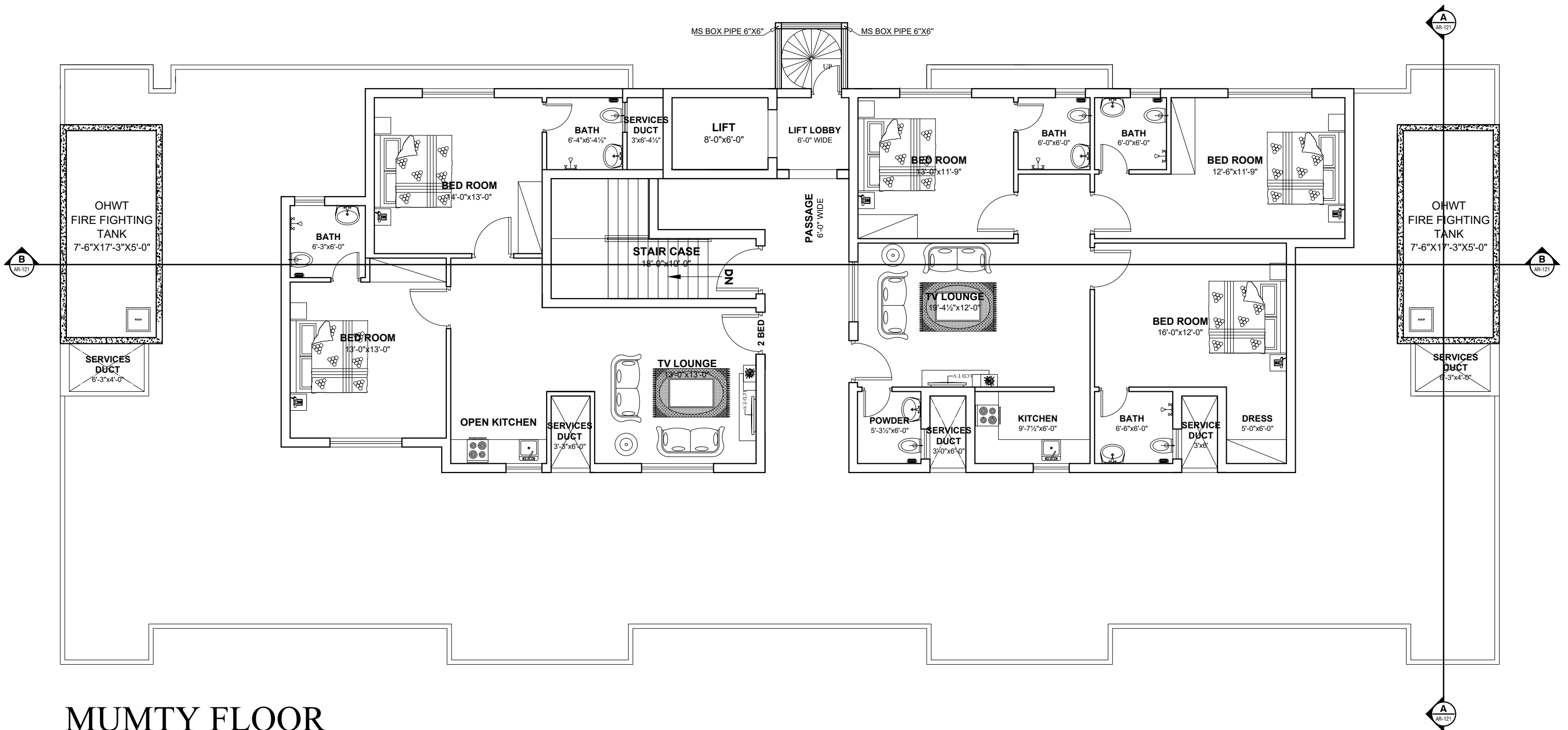
3RD FLOOR

3 x 2 BED APARTMENTS
4 x 1 BED APARTMENTS



4TH FLOOR

1 x 2 BED APARTMENTS
 7 x 1 BED APARTMENTS



MUMTY FLOOR

- 1 x 3 BED APARTMENTS
- 1 x 2 BED APARTMENTS